

# 1974 STYLE CABINET PLANS

-REV 1.2-



**MODULUS**

## Instructions:

Thanks to the guys at 18Watt.com .. the best resource for Marshall 18Watt amps ever!

These Drawings are inspired by the drawing created by Graydon Stuckey (GDS Amplification) and information posted by Erik.

For wood you need to use "void free" wood, this is normally high grade birch or mahogany ply or due to the recession MDF can be used... but it leaves the tone sounding cheap.

Solid wood can be used too, but again must be of suitable void free quality.. no knotted pine cabs allowed!

If you choose to ignore this and use industrial/building grade ply you will experience a buzzy sound that would get you kicked out of most heavy metal bands... or at least drive you up the wall. .. Trust me I have been up and down the wall several times.

Dimensions have been (mostly) shown in millimetres and inches, I find cabs built with the millimetres dimensions are clearer and less confusing. But I think that has to do with my metric approach to tonality. Experiment.

There are no screws/dowels/finger joints/dovetail joints shown. If you want a fancy joint you should have enough knowledge to modify the side panel length to suit.

Wood dowels can easily be drilled and inserted , screws could be used.. some manufactures have been found to use finishing nails... either way make sure you have good clamps for holding the cab while gluing.

Check the dimensions of your chassis to ensure it will fit within the area allowed, if it does not fit you will need to adjust the mounting block positions.

REMEMBER: Think before you cut, and don't drink before you cut as you may loose a finger or two.

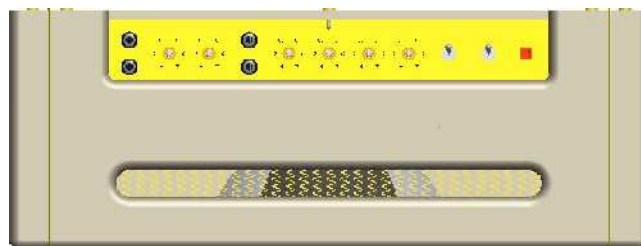
I will not be held responsibly for loss of limbs cause by cheap/faulty equipment or the wrong use of cheap/faulty equipment. ...and don't kill yourself.

This Document is the copyright of MODULUS Amplification. Please don't copy it wrong without my expressed permission.

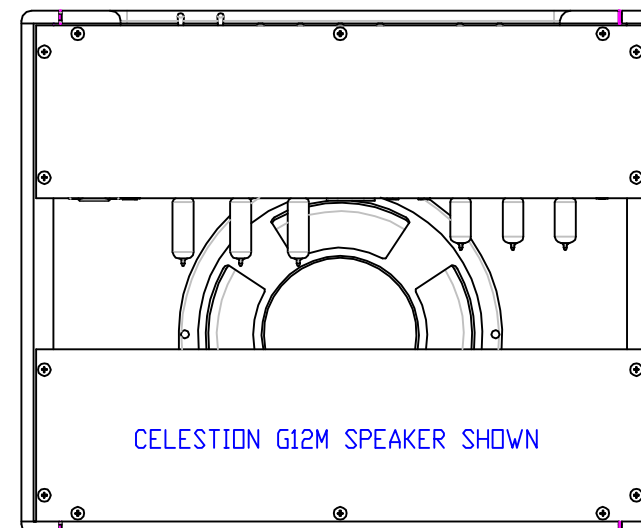
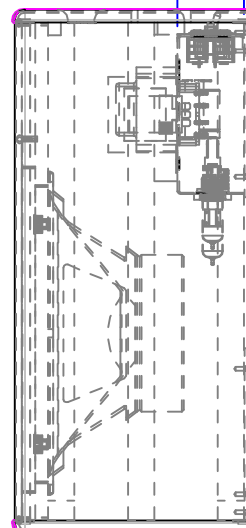
Any Questions or queries or corrections can be mailed to me at [modulus-amp@uwclub.net](mailto:modulus-amp@uwclub.net).

Cheers

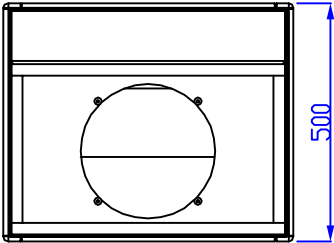
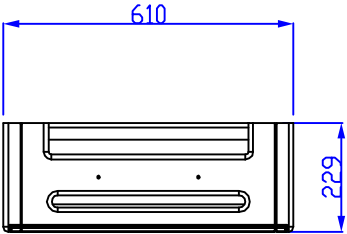
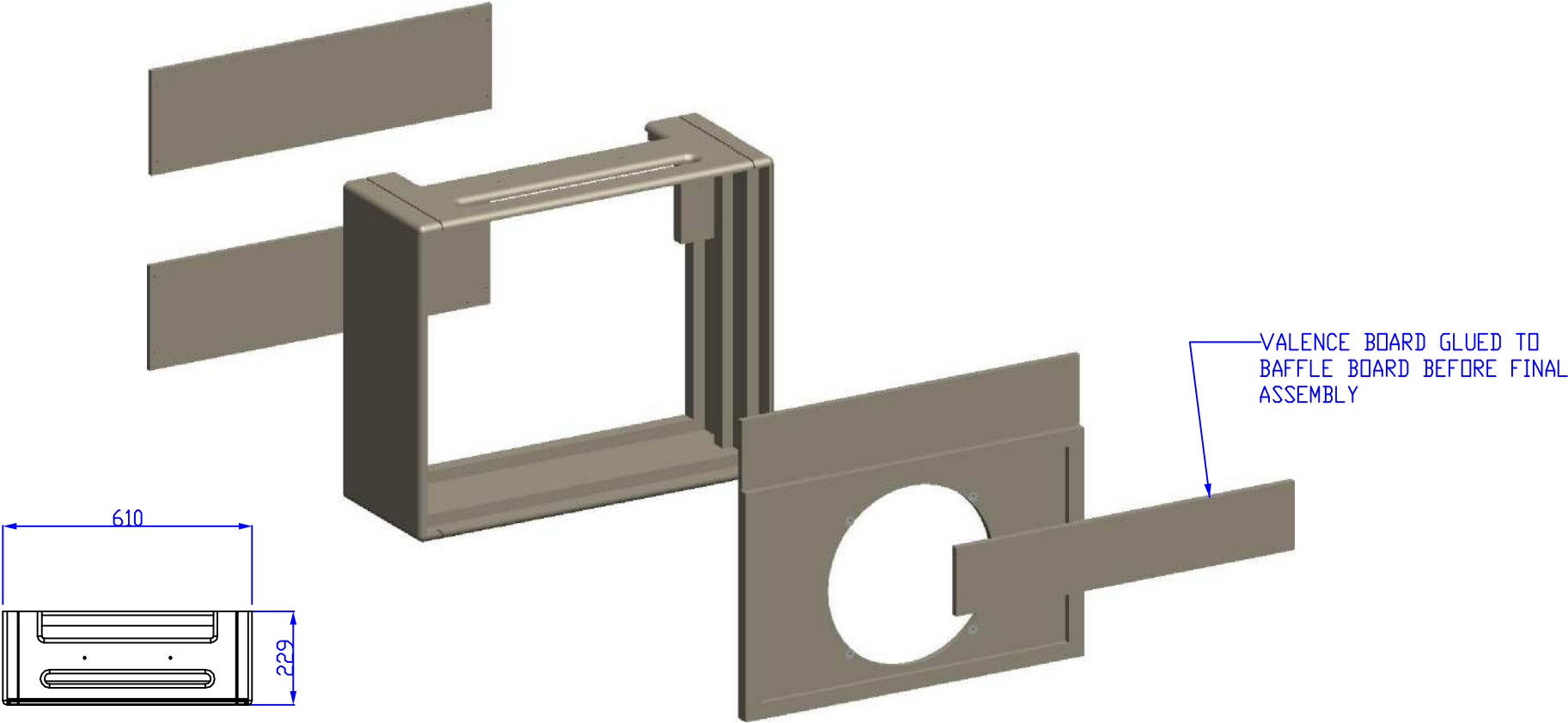
Mike




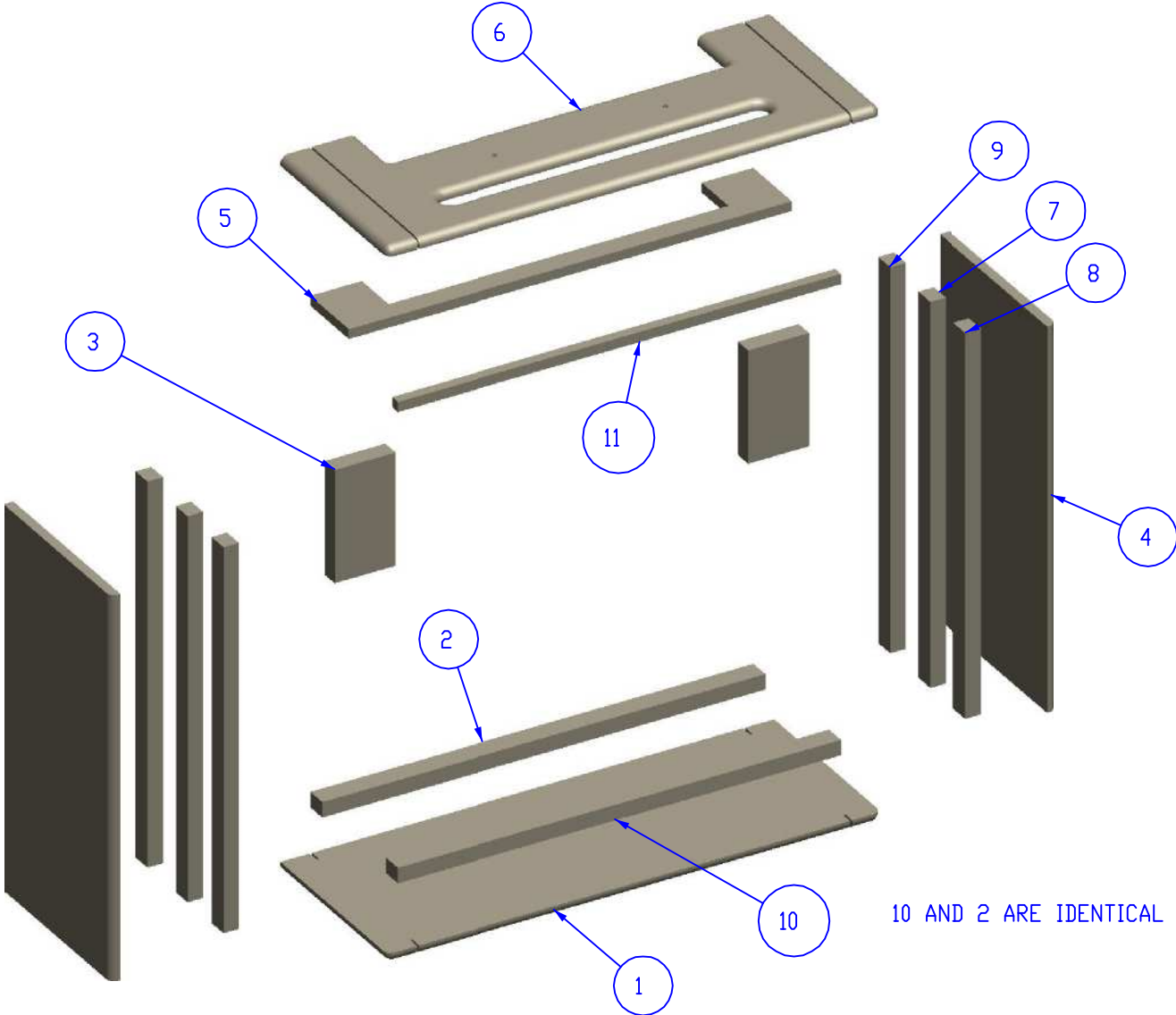
63.5 CHASSIS DEPTH -  
ADJUST MOUNTING BLOCK  
POSITION IF DIFFERENT



		3rd ANGLE PROJ 	THIS DRAWING IS THE PROPERTY OF MODULUS AMPLIFICATION AND MUST NOT BE REPRODUCED OR LOANED WITHOUT WRITTEN PERMISSION	
TITLE		FINAL ASSEMBLY 1974 STYLE CABINET		DRAWN BY - M.MORTIMER DATE - 20/11/08
MATERIAL	SEE DETAILS		1974	ISSUE: 01X



		3rd ANGLE PROJ 	THIS DRAWING IS THE PROPERTY OF MODULUS AMPLIFICATION AND MUST NOT BE REPRODUCED OR LOANED WITHOUT WRITTEN PERMISSION	
TITLE		BOX ASSEMBLY		DRAWN BY - M.MORTIMER
		1974 STYLE COMBO CABINET		DATE - 20/11/08
MATERIAL	SEE DETAILS	DRAWING No. 1974-1		ISSUE: 01X



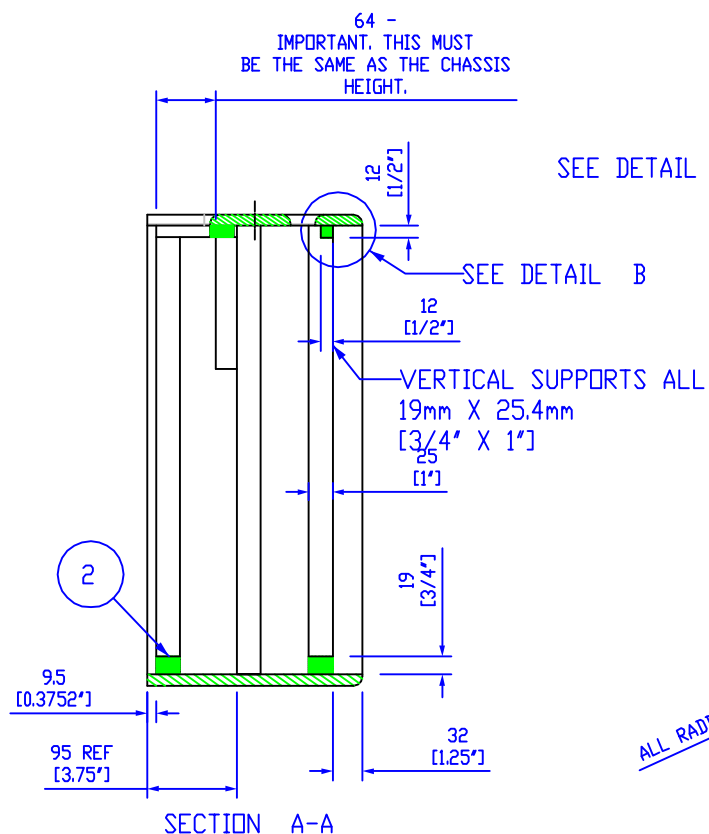
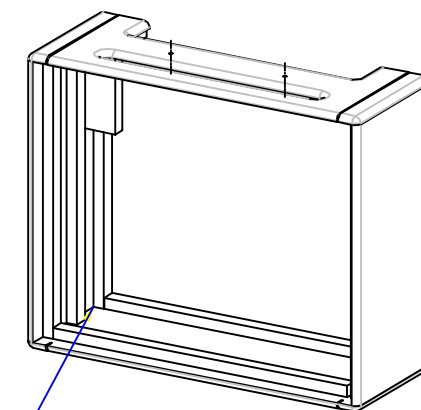
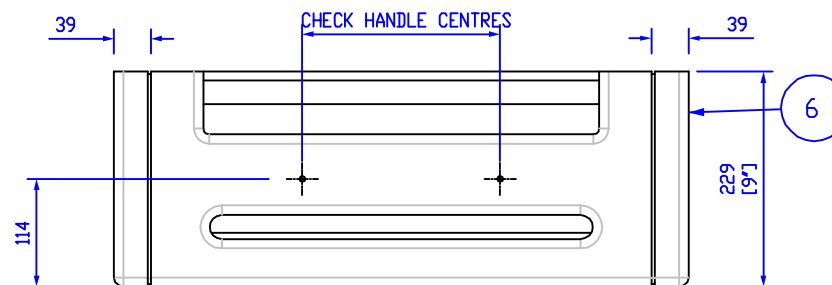
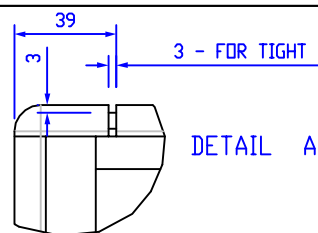
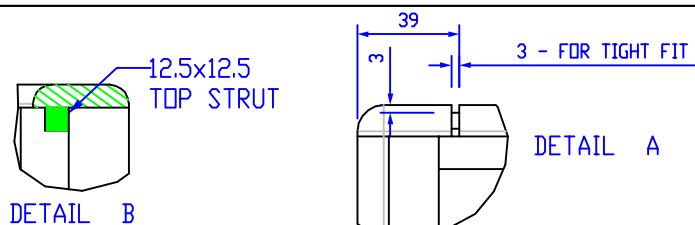
7, 8, AND 9 ARE IDENTICAL

10 AND 2 ARE IDENTICAL

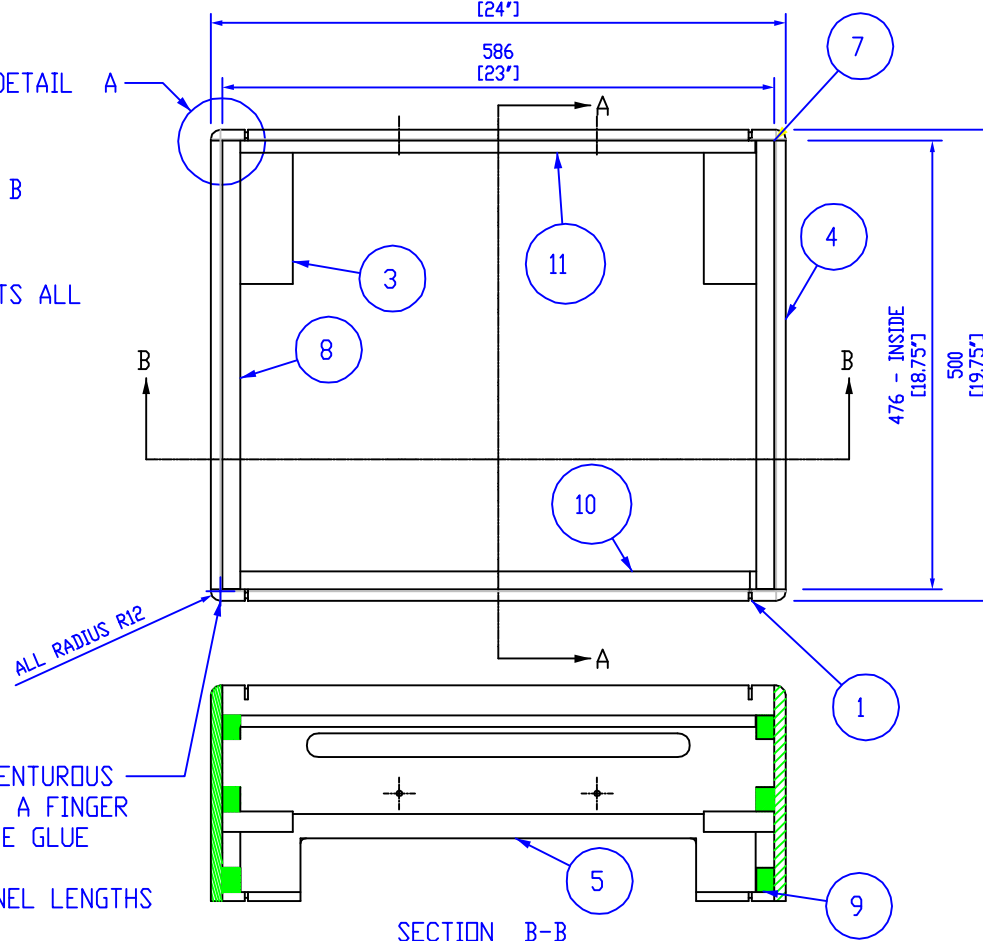
ITEM	PART	QTY
1	BOTTOM-PANEL	1
2	HOR - BATON	1
3	CHASSIS BLOCK	2
4	SIDE_PANEL	2
5	SPACER-PANEL	1
6	TOP-PANEL	1
7	VERT - BATON	2
8	VERT - BATON	2
9	VERT - BATON	2
10	HOR-BATON	1
11	HOR-BATON - SMALL	1

		3rd ANGLE PROJ	THIS DRAWING IS THE PROPERTY OF MODULUS AMPLIFICATION AND MUST NOT BE REPRODUCED OR LOANED WITHOUT WRITTEN PERMISSION	
TITLE		BOX EXPLODED VIEW 1974 STYLE COMBO CAB		DRAWN BY - M.MORTIMER DATE - 20/11/08
MATERIAL	SEE DETAILS	1974-2		ISSUE: 01X

DO NOT SCALE



FOR THOSE MORE ADVENTUROUS  
YOU COULD MAKE THIS A FINGER  
JOINTED BOX FOR MORE GLUE  
CONTACT AREA.  
ADJUST VERTICAL PANEL LENGTHS  
TO SUIT

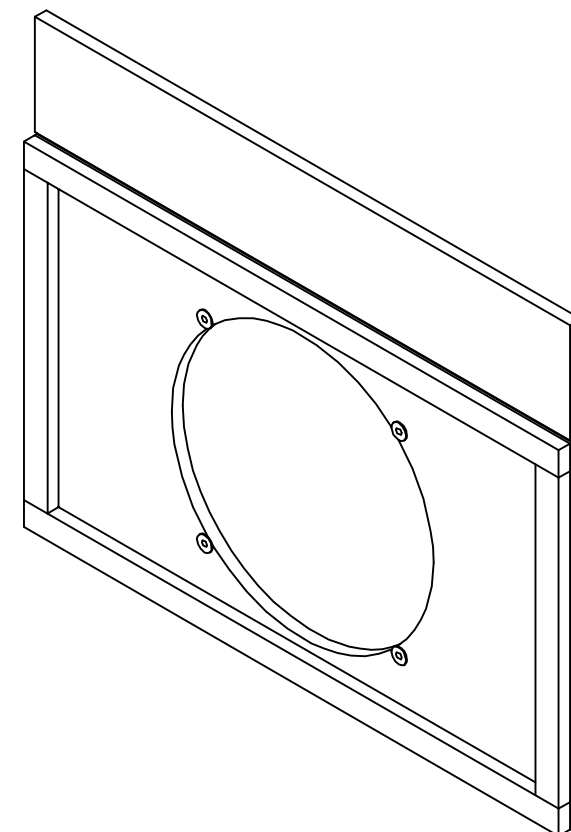
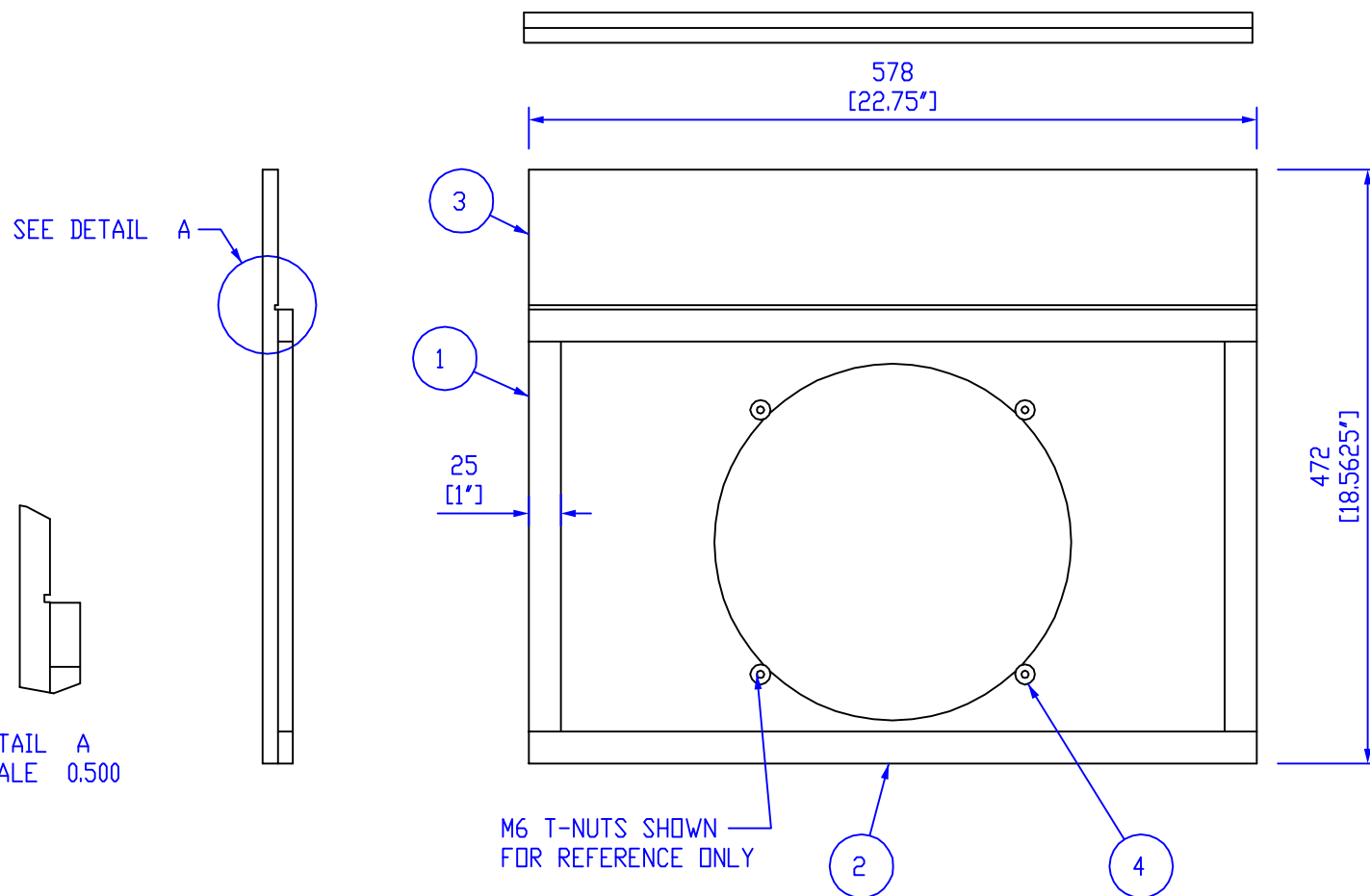


ITEM	PART	QTY
1	BOTTOM-PANEL	1
2	HOR-BATON	1
3	CHASSIS BLOCK	2
4	SIDE_PANEL	2
5	CH SPACER BOARD	1
6	TOP-PANEL	1
7	VERT- BATON	2
8	VERT-BATON	2
9	VERT-BATON	2
10	HOR-BATON	1
11	TOP HOR-BATON	1

3rd ANGLE PROJ		THIS DRAWING IS THE PROPERTY OF MODULUS AMPLIFICATION AND MUST NOT BE REPRODUCED OR LOANED WITHOUT WRITTEN PERMISSION	
TITLE		DRAWN BY - M.MORTIMER	
BOX ASSEMBLY		DATE - 20/11/08	
1974 STYLE COMBO CABINET		DRAWING No.	
MATERIAL		ISSUE	
SEE DETAILS		1974-3	
		01X	

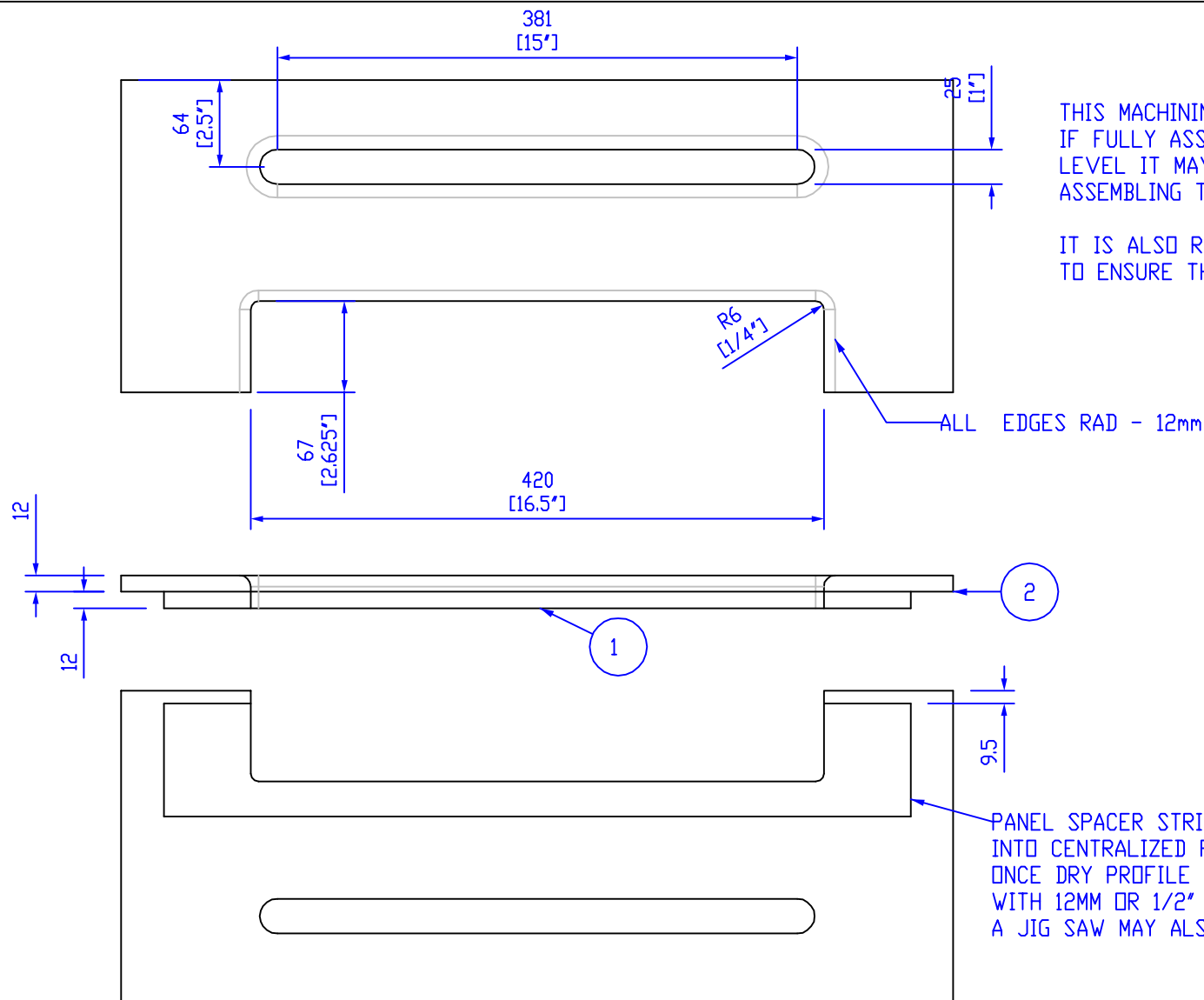
VALENCE BOARD SHOULD ONLY BE FITTED ONCE THE GRILL CLOTH HAS BEEN FITTED. DO NOT GLUE IT ON AS PART OF THIS ASSEMBLY

FOUR BAFFLE STRIPS GLUED TO BAFFLE BOARD TO SPACE GRILL CLOTH OFF MAIN BOARD AND ALIGN WITH VALENCE BOARD



ITEM	PART	QTY
1	BAFFLESTRIP	2
2	BAFFLESTRIP	2
3	BAFFLE BOARD	1
4	M6-TNUT	4

		3rd ANGLE PROJ 	THIS DRAWING IS THE PROPERTY OF MODULUS AMPLIFICATION AND MUST NOT BE REPRODUCED OR LOANED WITHOUT WRITTEN PERMISSION	
TITLE		BAFFLE ASSEMBLY 1974 STYLE COMBO CAB		DRAWN BY - M.MORTIMER DATE - 20/11/08
MATERIAL	SEE DETAILS	1974-4		ISSUE: 01X



THIS MACHINING CAN BE DONE ONCE THE CABINET IS FULLY ASSEMBLED, HOWEVER DEPENDING ON SKILL LEVEL IT MAY BE BETTER TO COMPLETE THE CUT OUTS BEFORE ASSEMBLING THE CABINET IN CASE ANY BLUNDERS OCCUR.

IT IS ALSO RECOMMENDED TO USE SUITABLE GUIDES AND JIGS TO ENSURE THE ROUTER STAYS TRUE TO THE CUTLINE.

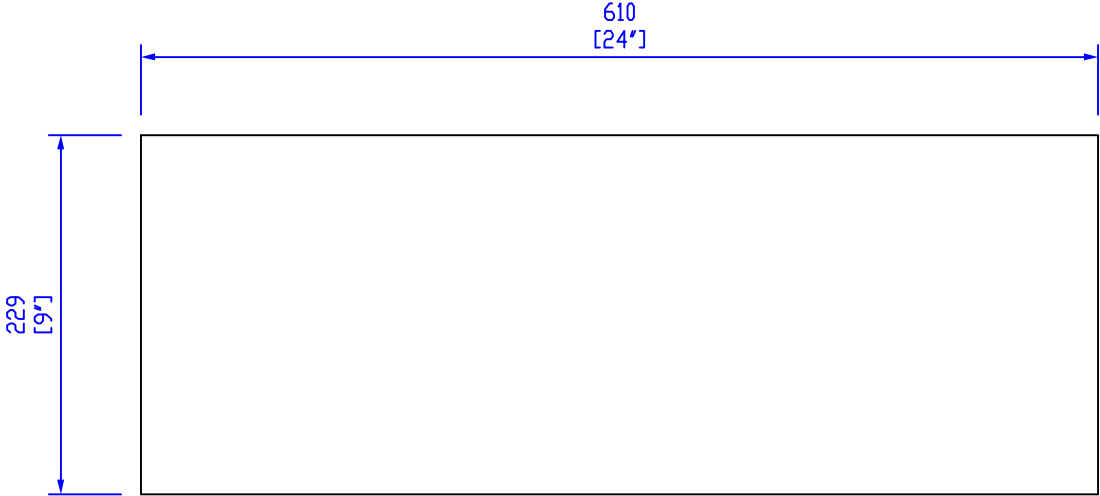
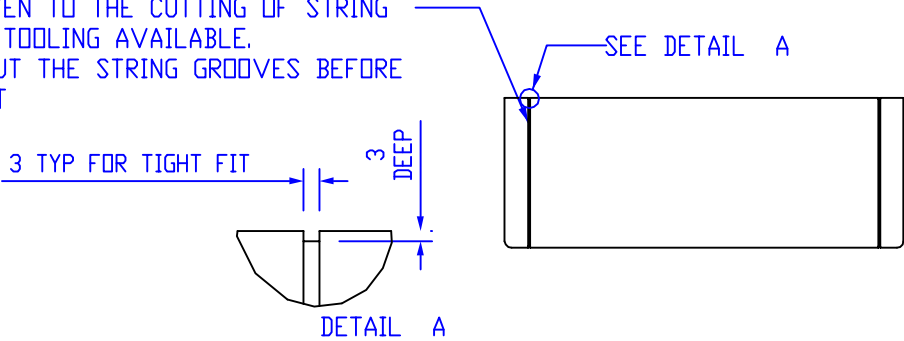
PANEL SPACER STRIP GLUED AND CLAMPED INTO CENTRALIZED POSITION. ONCE DRY PROFILE SHAPE CAN BE MACHINE OUT USING A ROUTER WITH 12MM OR 1/2" CUTTER. A JIG SAW MAY ALSO BE USED, GIVING SQUARED CORNERS.


ITEM	PART	QTY
1	SPACER BOARD	1
2	TOP-PANEL	1

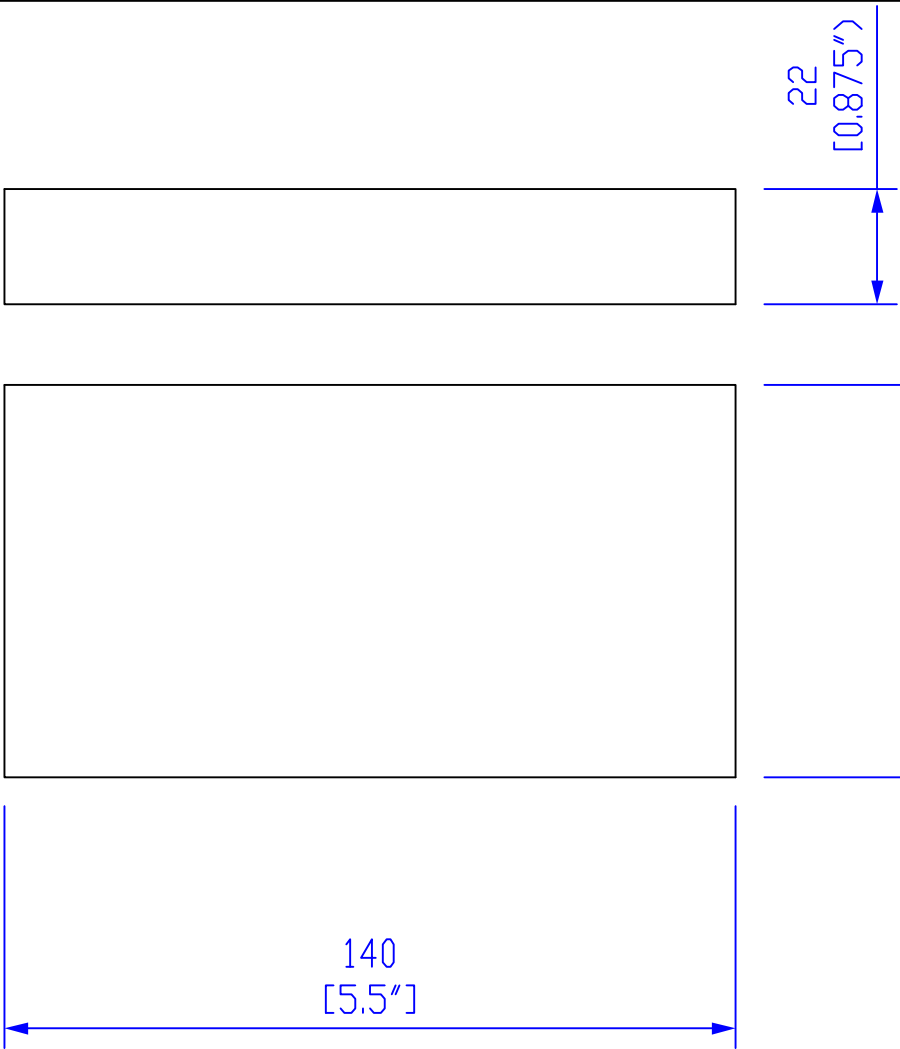
		3rd ANGLE PROJ	THIS DRAWING IS THE PROPERTY OF MODULUS AMPLIFICATION AND MUST NOT BE REPRODUCED OR LOANED WITHOUT WRITTEN PERMISSION	
TITLE		TOP MACHINING DETAILS 1974 STYLE COMBO CAB	DRAWN BY - M.MORTIMER DATE - 20/11/08	
MATERIAL	SEE DETAILS	1974-5	ISSUE	01X



THOUGHT SHOULD BE GIVEN TO THE CUTTING OF STRING GROOVES DEPENDING ON TOOLING AVAILABLE. IT MAY BE EASIER TO CUT THE STRING GROOVES BEFORE ASSEMBLING THE CABINET




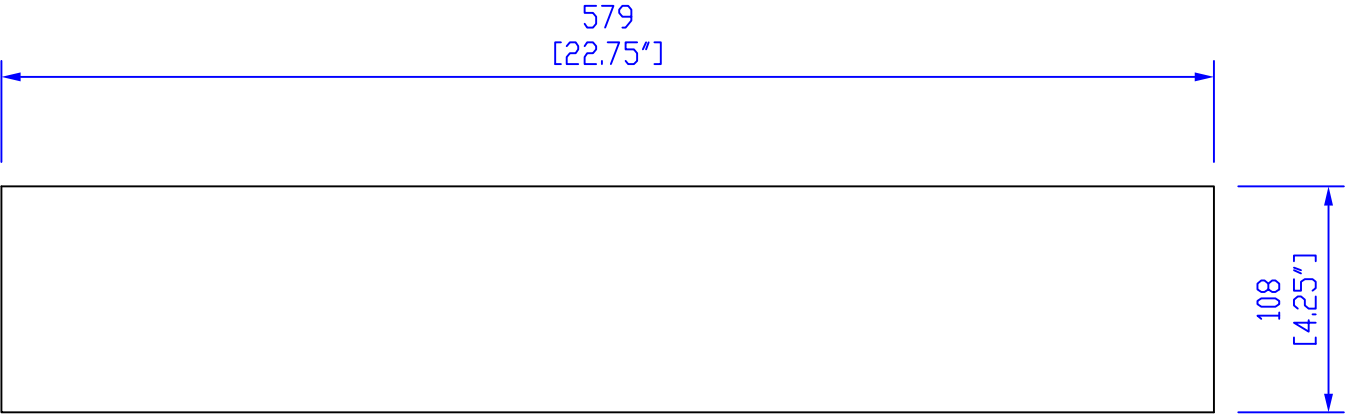
		3rd ANGLE PROJ 	THIS DRAWING IS THE PROPERTY OF MODULUS AMPLIFICATION AND MUST NOT BE REPRODUCED OR LOANED WITHOUT WRITTEN PERMISSION	
TITLE BOTTOM PANEL 1974 STYLE CABINET			DRAWN BY - M.MORTIMER	
			DATE - 20/11/08	
MATERIAL		SEE DETAILS	DRAWING No.	ISSUE:
			1974-6	01X



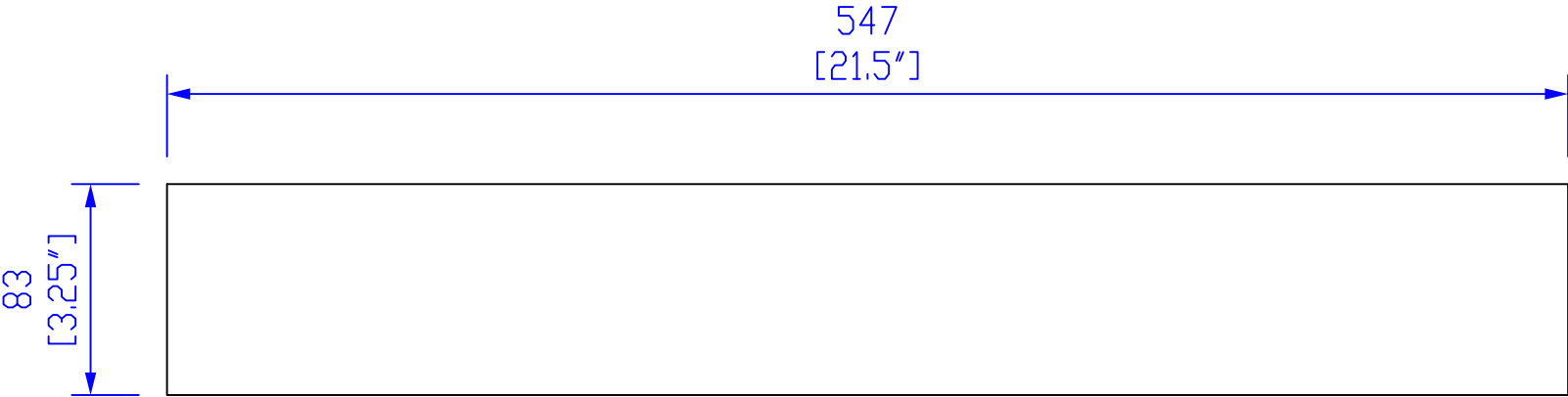
MATERIAL THICKNESS CAN BE REDUCED TO 19mm [3/4"]  
HOWEVER THE POSITION OF THE VERTICAL STRUTS ON  
THE COMBO ASSEMBLY MUST BE ADJUSTED TO SUIT THE  
NEW BLOCK THICKNESS AND CHASSIS THICKNESS

2 REQUIRED

		3rd ANGLE PROJ 		THIS DRAWING IS THE PROPERTY OF MODULUS AMPLIFICATION AND MUST NOT BE REPRODUCED OR LOANED WITHOUT WRITTEN PERMISSION	
TITLE CHASSIS MOUNTING BLOCK 1974 STYLE COMBO CABINET				DRAWN BY - M.MORTIMER DATE - 20/11/08	
				DRAWING No. 1974-7	
MATERIAL		SEE DETAILS			

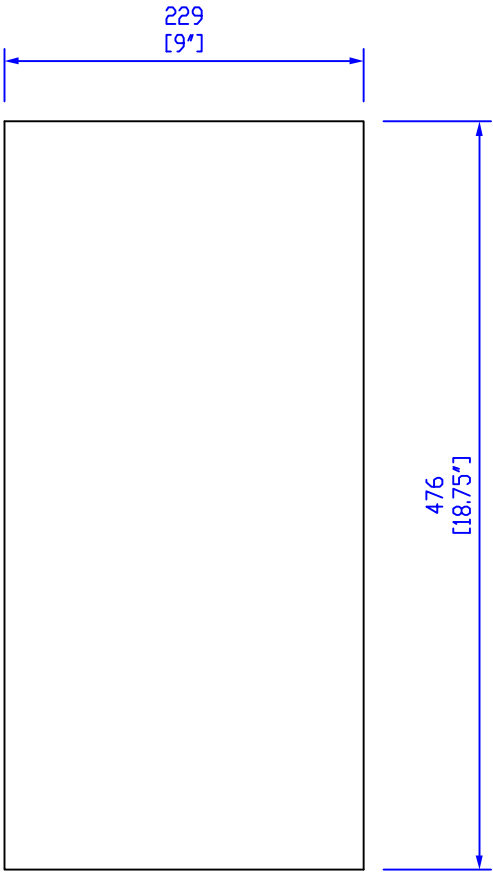


		3rd ANGLE PROJ 	THIS DRAWING IS THE PROPERTY OF MODULUS AMPLIFICATION AND MUST NOT BE REPRODUCED OR LOANED WITHOUT WRITTEN PERMISSION	
TITLE		VALENCE PANEL 1974 STYLE COMBO CABINET		DRAWN BY - M.MORTIMER DATE - 20/11/08
MATERIAL	SEE DETAILS	DRAWING No. 1974-8		ISSUE: 01X



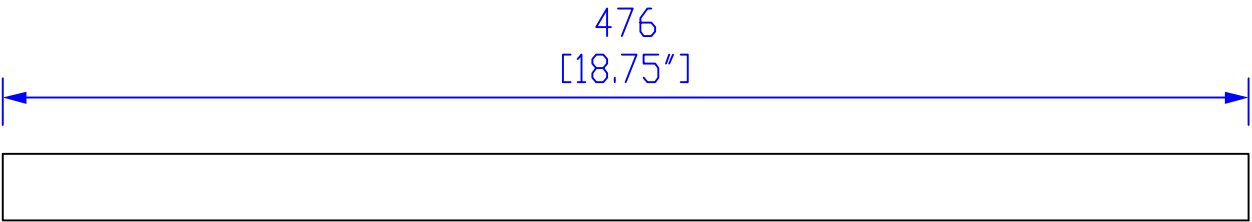
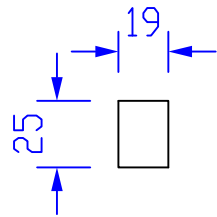
1 - REQUIRED  
THIS PART IS MACHINED TO SHAPE AFTER GLUEING TO TOP PANEL

		3rd ANGLE PROJ	THIS DRAWING IS THE PROPERTY OF MODULUS AMPLIFICATION AND MUST NOT BE REPRODUCED OR LOANED WITHOUT WRITTEN PERMISSION	
TITLE		DRAWN BY - M.MORTIMER		
		DATE - 20/11/08		
MATERIAL		DRAWING No.		ISSUE
SEE DETAILS		1974-9		01X

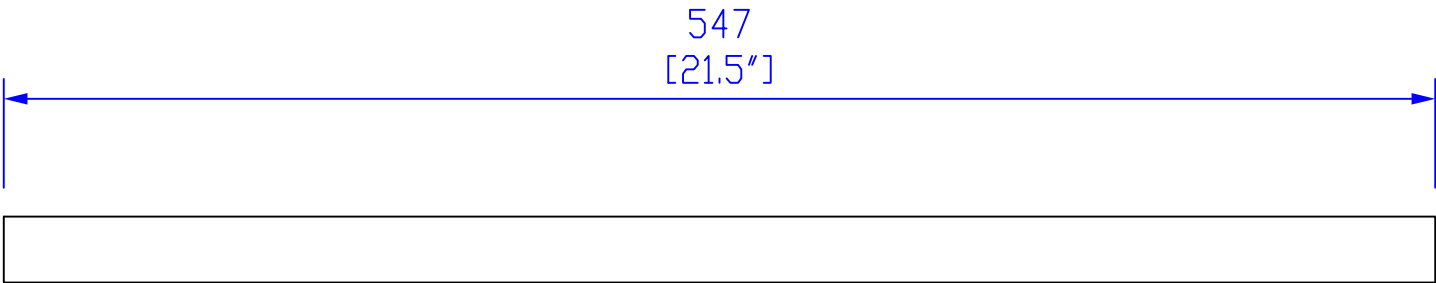
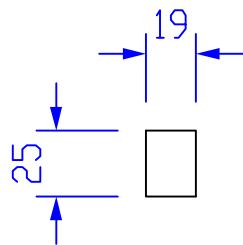


2 - REQUIRED

		3rd ANGLE PROJ	THIS DRAWING IS THE PROPERTY OF MODULUS AMPLIFICATION AND MUST NOT BE REPRODUCED OR LOANED WITHOUT WRITTEN PERMISSION	
TITLE			DRAWN BY - M.MORTIMER	
SIDE PANEL			DATE - 20/11/08	
1974 STYLE CABINET			DRAWING No.	ISSUE
MATERIAL	SEE DETAILS		1974-10	01X

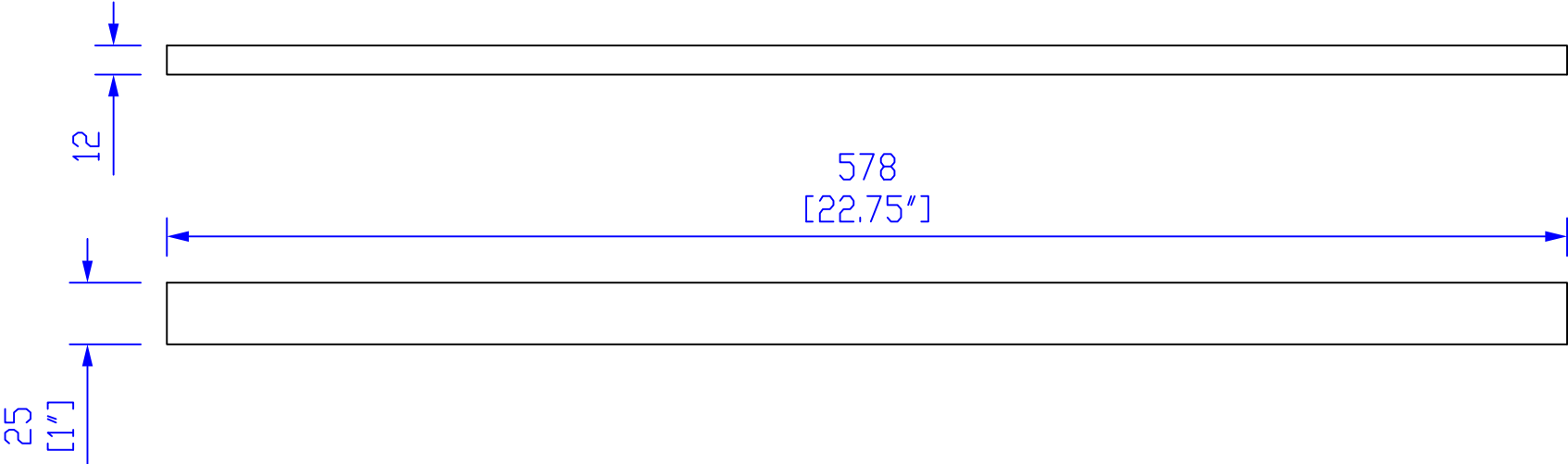


VERTICAL BATONS - 6 THIS LENGTH REQUIRED



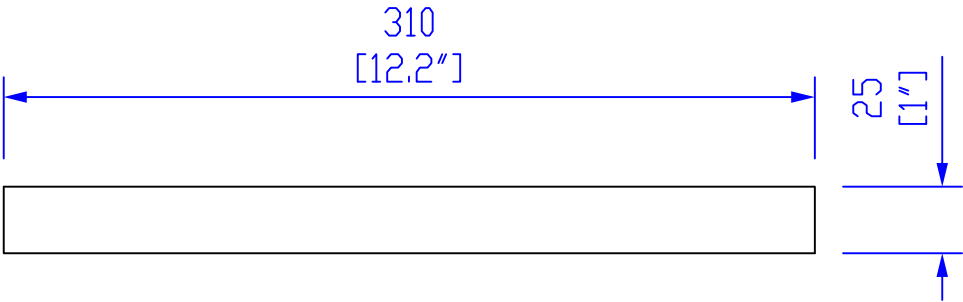
HORIZONTAL BATONS - 2 REQUIRED

		3rd ANGLE PROJ 	THIS DRAWING IS THE PROPERTY OF MODULUS AMPLIFICATION AND MUST NOT BE REPRODUCED OR LOANED WITHOUT WRITTEN PERMISSION	
TITLE BATONS 1974 STYLE COMBO CAB		DRAWN BY - M.MORTIMER DATE - 20/11/08		
MATERIAL	SEE DETAILS	DRAWING No. 1974-11		ISSUE 01X



2 REQUIRED

		3rd ANGLE PROJ	THIS DRAWING IS THE PROPERTY OF MODULUS AMPLIFICATION AND MUST NOT BE REPRODUCED OR LOANED WITHOUT WRITTEN PERMISSION	
TITLE		BAFFLE STRIP - LONG 1974 STYLE COMBO CAB		DRAWN BY - M.MORTIMER DATE - 20/11/08
MATERIAL	SEE DETAILS	DRAWING No. 1974-12		ISSUE: 01X



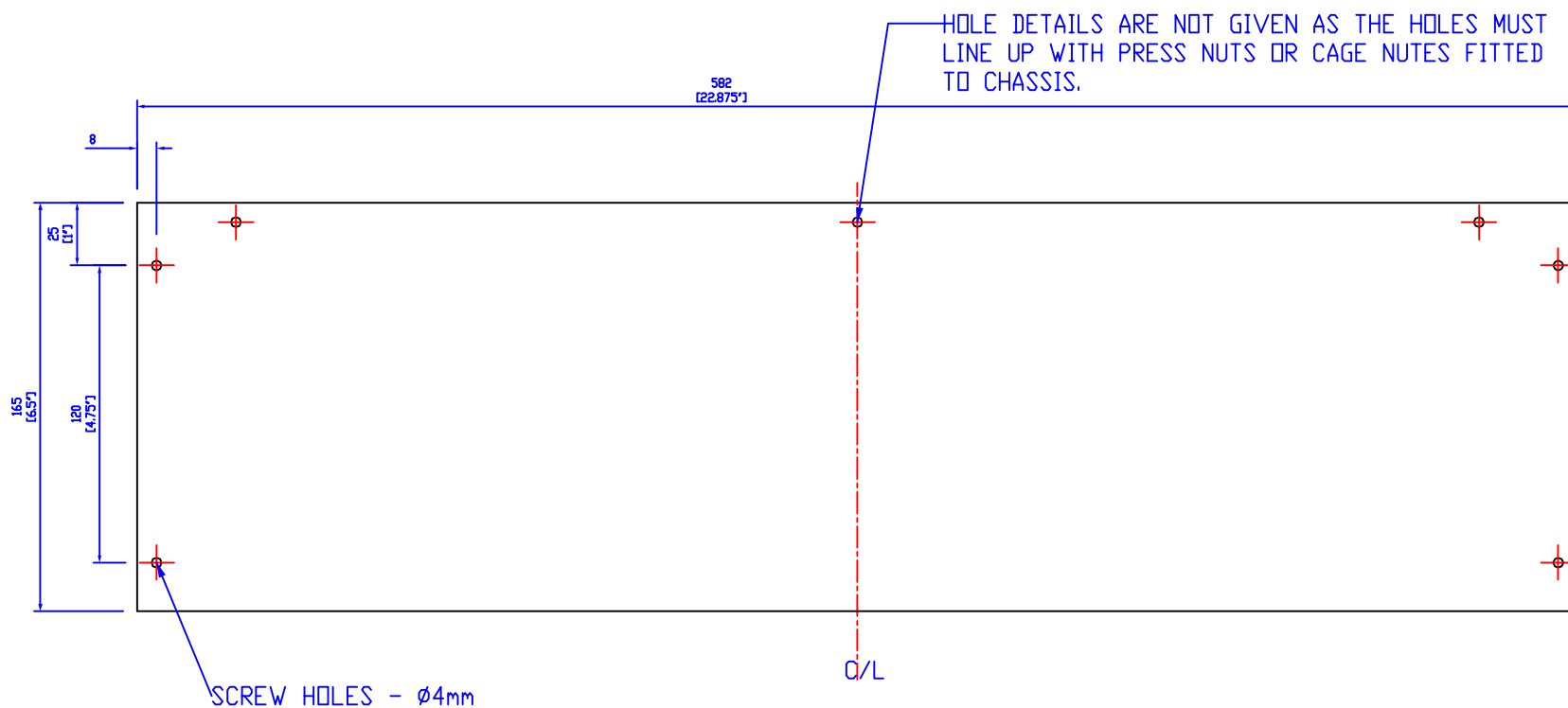
		3rd ANGLE PROJ 	THIS DRAWING IS THE PROPERTY OF MODULUS AMPLIFICATION AND MUST NOT BE REPRODUCED OR LOANED WITHOUT WRITTEN PERMISSION	
TITLE		BAFFLE STRIP - SHORT 1974 STYLE COMBO CAB		DRAWN BY - M.MORTIMER DATE - 20/11/08
MATERIAL	SEE DETAILS		DRAWING No. 1974-13	ISSUE 01X




IMPORTANT:  
CHECK YOUR OVERALL CHASSIS  
DIMENSION TO ENSURE 152MM IS  
SUFFICIENT TO FULLY CLOSE OFF  
CHASSIS REAR.

IF NOT - THE 165mm SIZE MUST BE  
INCREASED TO AT LEAST YOUR  
CHASSIS WIDTH + 13mm [1/2"]

THIS ONLY APPLIES TO THE TOP  
PANEL



2 - REQUIRED

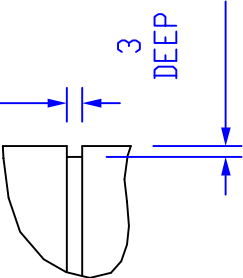
		3rd ANGLE PROJ 	THIS DRAWING IS THE PROPERTY OF MODULUS AMPLIFICATION AND MUST NOT BE REPRODUCED OR LOANED WITHOUT WRITTEN PERMISSION	
TITLE TOP AND BOTTOM REAR COVERS 1974 STYLE CABINET			DRAWN BY - M.MORTIMER DATE - 20/11/08	
			DRAWING No. 1974-14	
MATERIAL	SEE DETAILS		ISSUE: 01X	

THOUGHT SHOULD BE GIVEN TO THE CUTTING OF STRING  
GROOVES DEPENDING ON TOOLING AVAILABLE.  
IT MAY BE EASIER TO CUT THE STRING GROOVES BEFORE  
ASSEMBLING THE CABINET

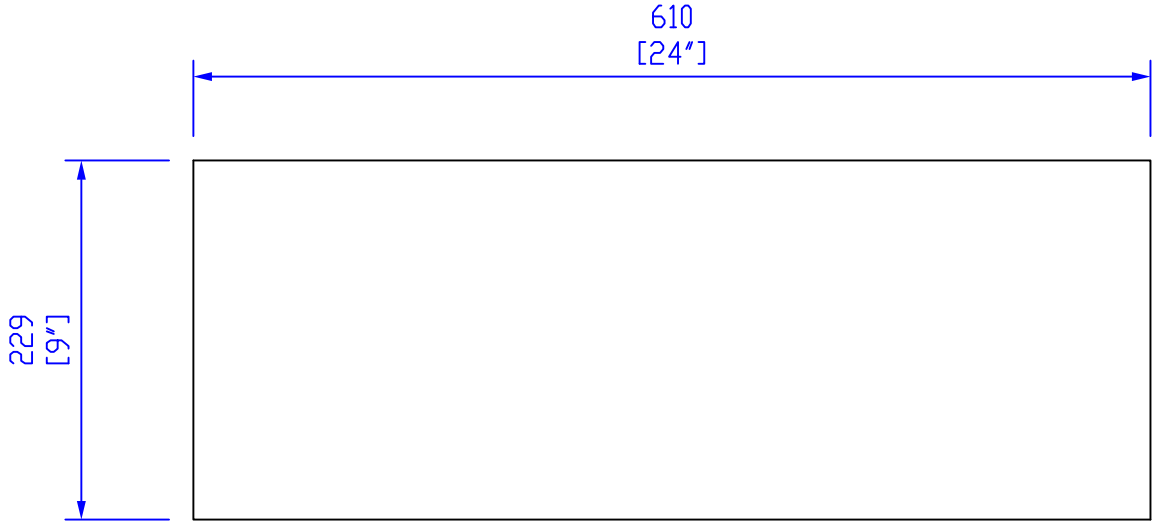
SEE DETAIL A



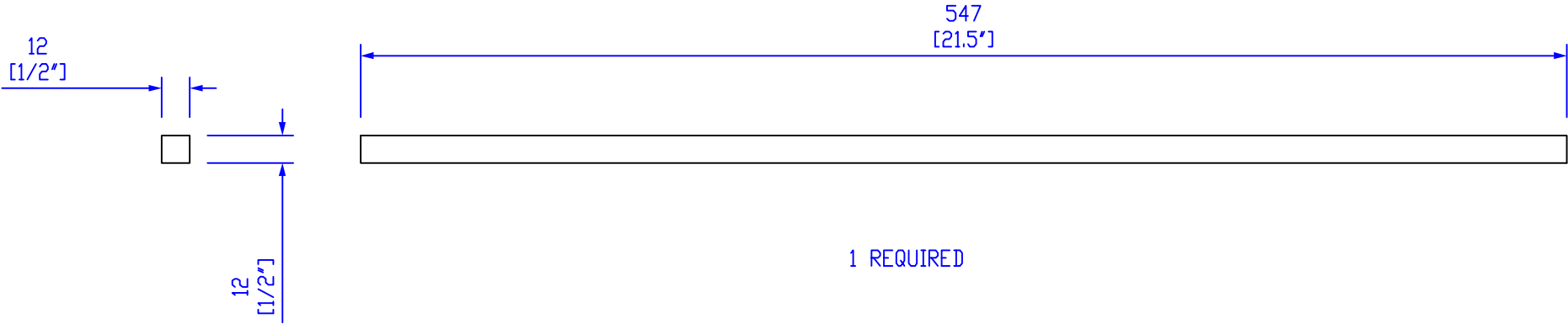
3 TYP FOR A TIGHT FIT  
CHECK DIAMETER OF STRING  
BEING USED AND THICKNESS  
OF COVERING



DETAIL A

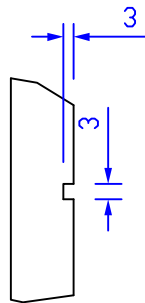


		3rd ANGLE PROJ 	THIS DRAWING IS THE PROPERTY OF MODULUS AMPLIFICATION AND MUST NOT BE REPRODUCED OR LOANED WITHOUT WRITTEN PERMISSION	
TITLE		TOP PANEL 1974 STYLE CABINET		DRAWN BY - M.MORTIMER DATE - 20/11/08
MATERIAL	SEE DETAILS		DRAWING No. 1974-15	ISSUE 01X

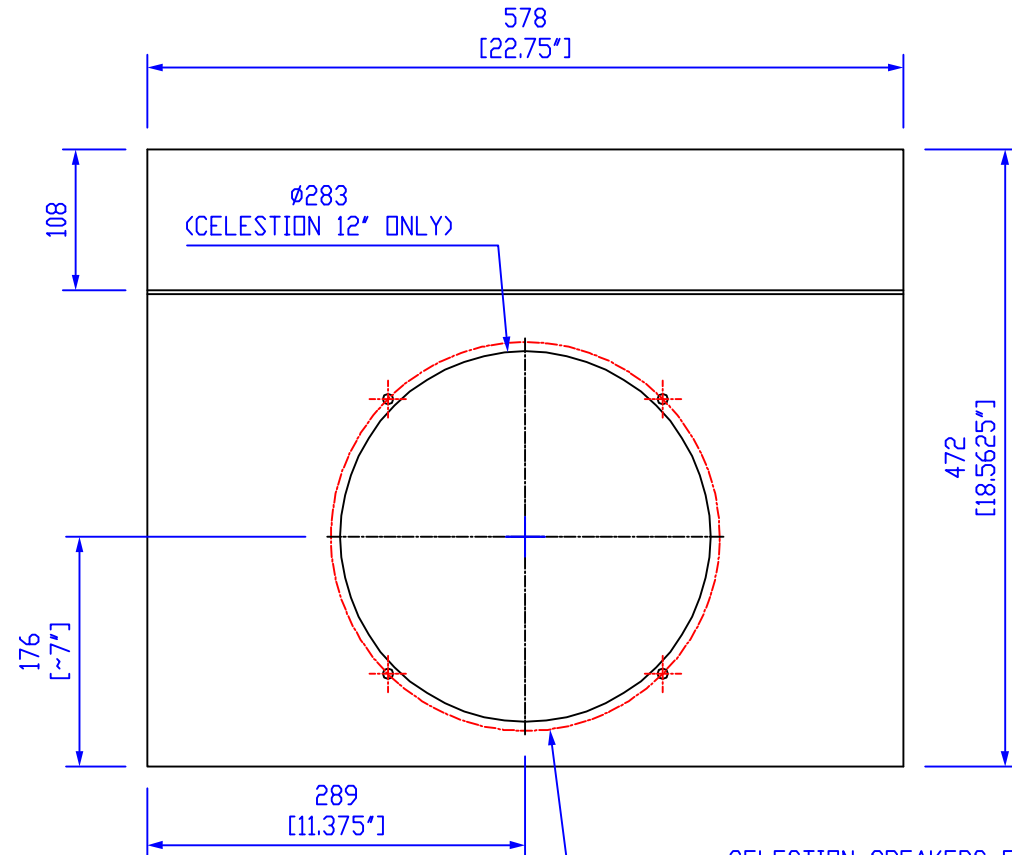
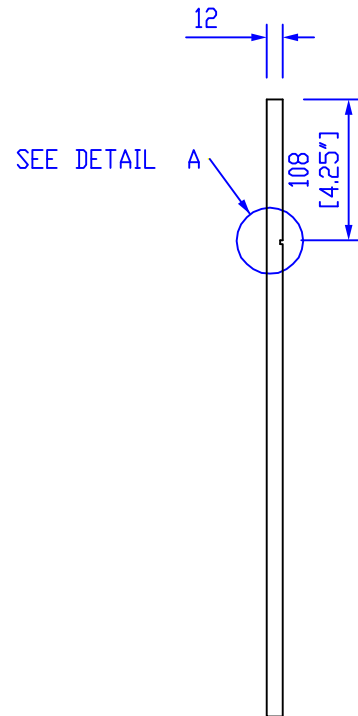


		3rd ANGLE PROJ	THIS DRAWING IS THE PROPERTY OF MODULUS AMPLIFICATION AND MUST NOT BE REPRODUCED OR LOANED WITHOUT WRITTEN PERMISSION	
TITLE		TOP BATON 1974 STYLE COMBO CAB		DRAWN BY - M.MORTIMER DATE - 20/11/08
MATERIAL	SEE DETAILS	DRAWING No. 1974-16		ISSUE: 01X

DETAIL A




SLOT CUT INTO BAFFLE TO ALLOW  
FOR WINGED PIPING.  
THIS MAY NOT BE NECESSARY, BUT  
CAN HELP WHEN ALIGNING THE BAFFLE STRIPS.



CELESTION SPEAKERS ONLY:  
ø297 4 MOUNTING HOLES EQUAL SPACED  
ON PCD 297mm.

DEPENDENT ON METHOD OF MOUNTING THE  
SPEAKER THE HOLE DIAMETER SHOULD BE  
DRILLED TO SUIT T-NUTS OR MOUNTING SCREWS

		3rd ANGLE PROJ 	THIS DRAWING IS THE PROPERTY OF MODULUS AMPLIFICATION AND MUST NOT BE REPRODUCED OR LOANED WITHOUT WRITTEN PERMISSION	
TITLE BAFFLE BOARD 1974 STYLE COMBO CABINET			DRAWN BY - M.MORTIMER DATE - 20/11/08	
			DRAWING No.	ISSUE:
MATERIAL	SEE DETAILS		1974-7	01X